

Inclusive logic: Less talk, more action!



Credit: Dreamstime

Logic Mentoring Workshop @ CSL
Elaine Pimentel - UCL
14 February 2022

Outline

01 Why should I care?

02 Actions -- gender

03 Actions -- race

04 Actions -- research

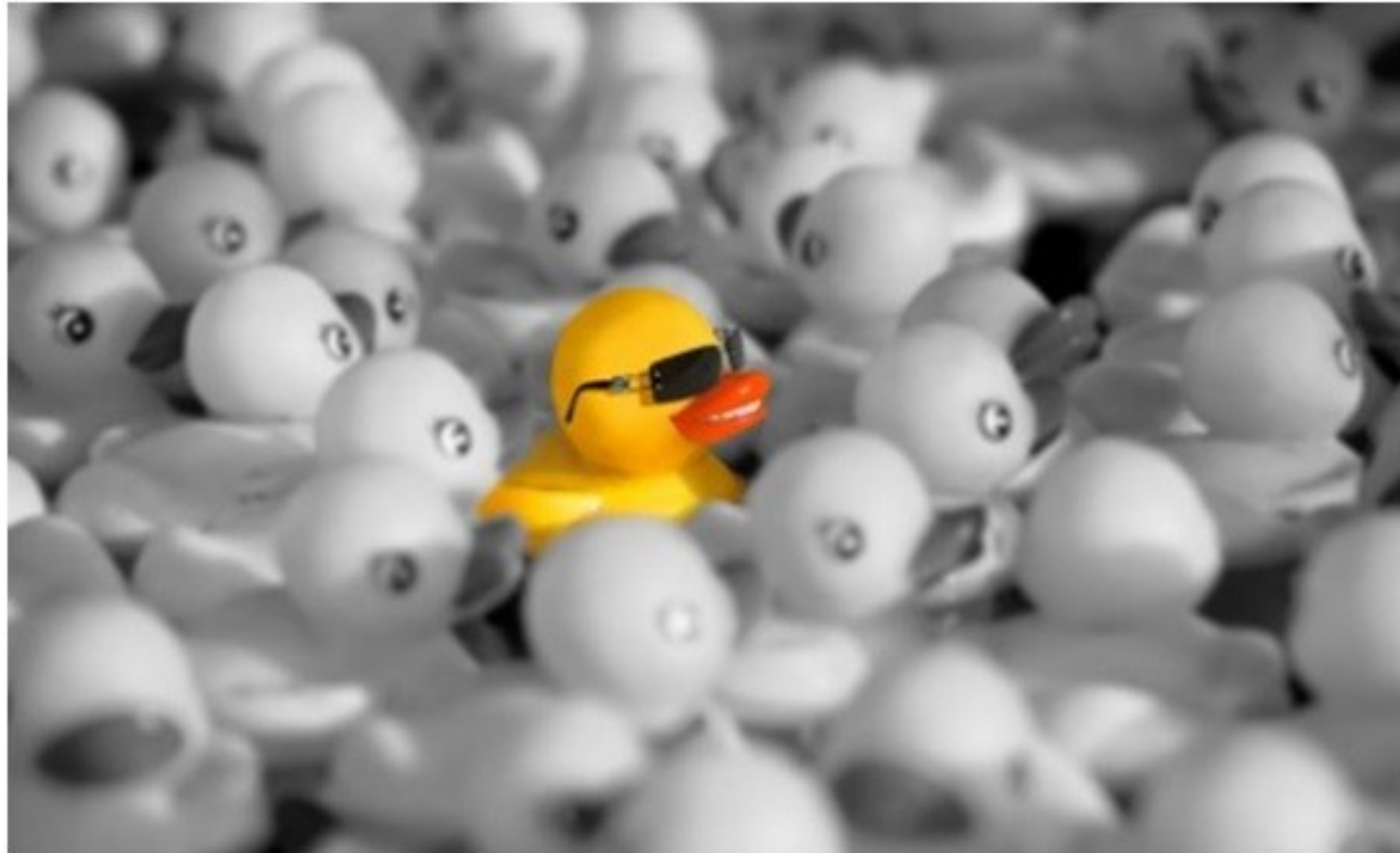
Logic, you gorgeous!!

1

Caring



Or the happy *grimme ælling*?

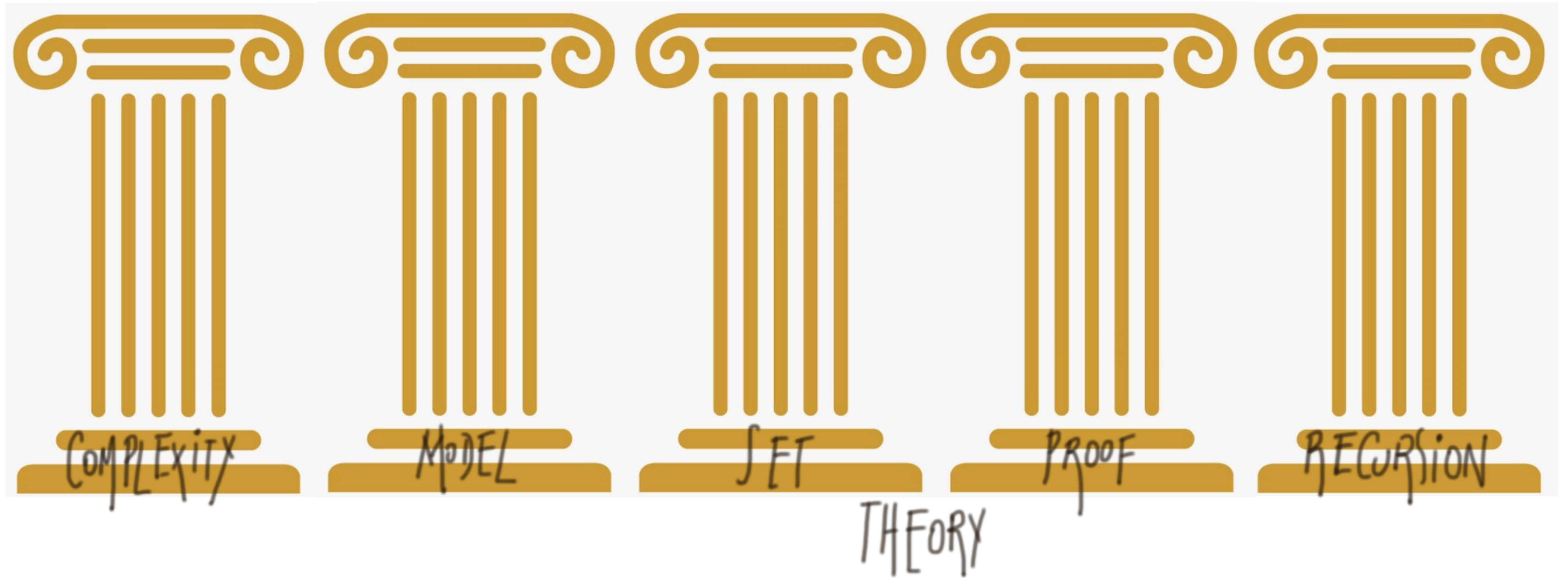


1
Caring

Credit: Digital senior

In Math

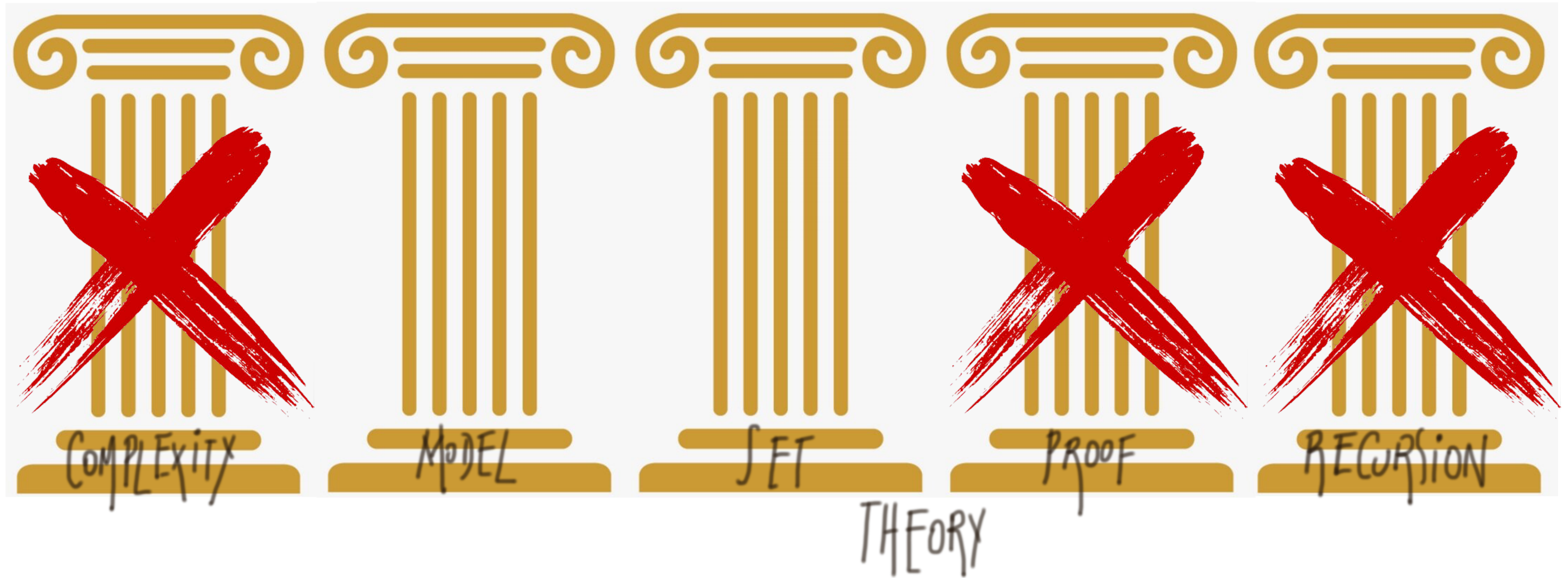
MATHEMATICAL LOGIC



1
Caring

In Math

MATHEMATICAL LOGIC



1

Caring

In Philosophy

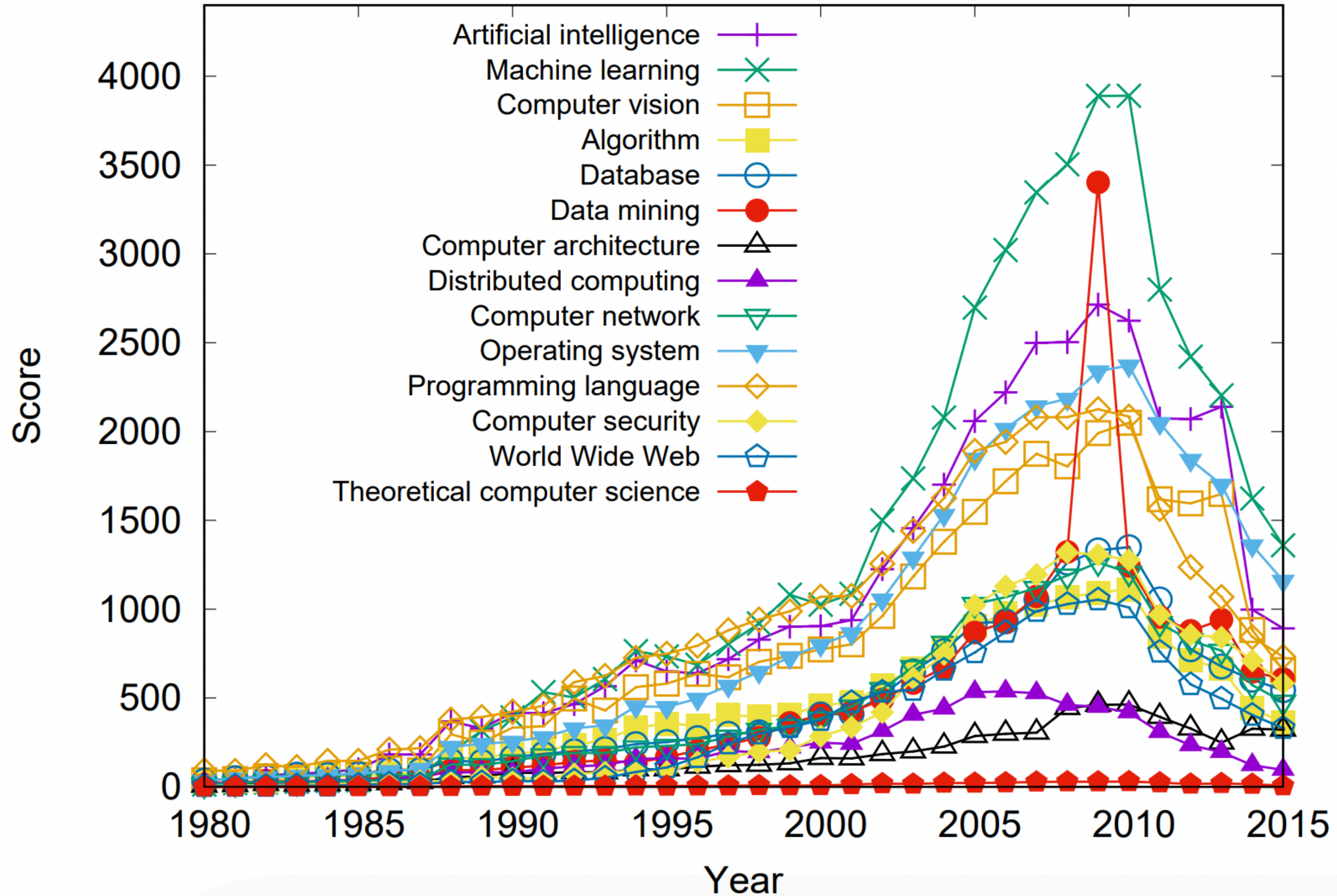
1
Caring

MATRÍCULA WEB		2021/2 Entrar		
	Código	Disciplina	Créditos	Área
PÓS-GRADUAÇÃO(Mestrado/Doutorado)	206474	EPISTEMOLOGIA	004 002 000 000	AC
CURSO +	207616	ESTÉTICA E FILOSOFIA DA ARTE	004 002 000 000	AC
OFERTA +	202681	ÉTICA FILOSÓFICA	004 002 000 004	AC
SERVIÇOS +	206512	FILOSOFIA ANTIGA	004 002 000 000	AC
	100609	FILOSOFIA CONTEMPORÂNEA	004 002 000 000	AC
	207624	FILOSOFIA DA CIÊNCIA	004 002 000 000	AC
	102539	FILOSOFIA GERAL E METAFÍSICA	004 002 000 000	AC
	206491	FILOSOFIA MEDIEVAL	004 002 000 000	AC
	207608	FILOSOFIA MODERNA	004 002 000 000	AC
	206482	FILOSOFIA POLÍTICA	004 002 000 000	AC
	201405	INTROD À HISTÓRIA DA FILOSOFIA	004 002 000 004	AC
	201448	INTRODUÇÃO A PRAT FILOSÓFICA	004 002 000 006	AC
	206504	LÓGICA	004 002 000 000	AC
	137391	MONOGRAFIA FILOSÓFICA	008 000 000 008	AC
	136069	PROJ DE MONOGRAFIA FILOSÓFICA	004 000 000 005	AC
	100587	TEORIAS FILOSÓFICAS LINGUAGEM	004 002 000 000	AC

© 2022 STI
UnB - Universidade de Brasília

In Computer Science

1
Caring



Analysing Trends in Computer Science Research

A Preliminary Study Using The Microsoft Academic Graph

Suhendry Effendy, Roland H.C. Yap

2017 International World Wide Web Conference Committee (IW3C2)

Little voice, almost no recognition

what are other
words for
underrepresented?



undersold, understated,
lessened, diminished,
underpriced, denigrated,
cheapened, undercharged



Underrepresentation within the underrepresentation

1 Caring



Credit: www

The lack of common diversity in various areas of knowledge is not different in logic

Underrepresentation within the underrepresentation

1
Caring

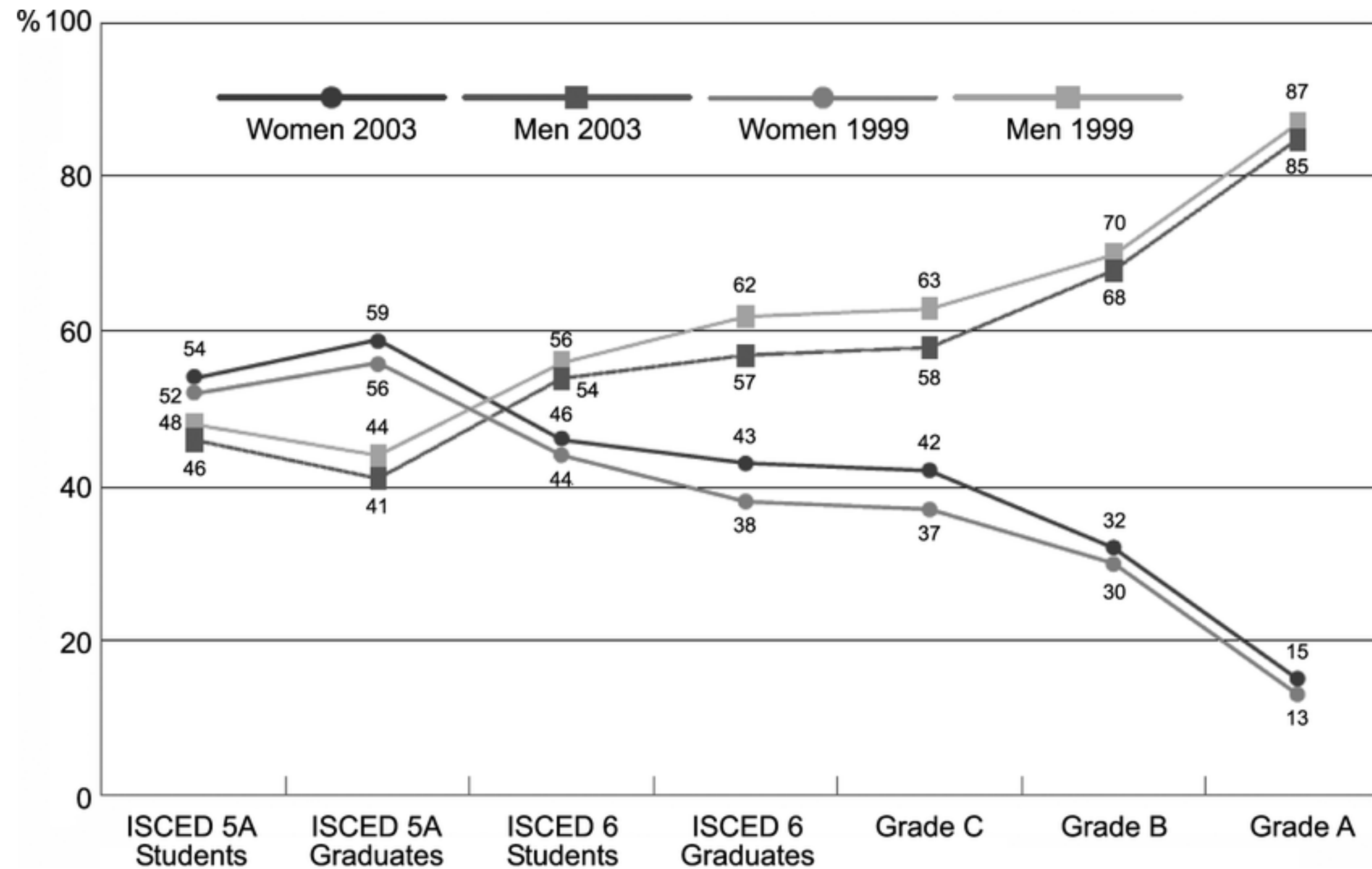


Credit: www

ACTIONS!

Women

2 Actions Gender



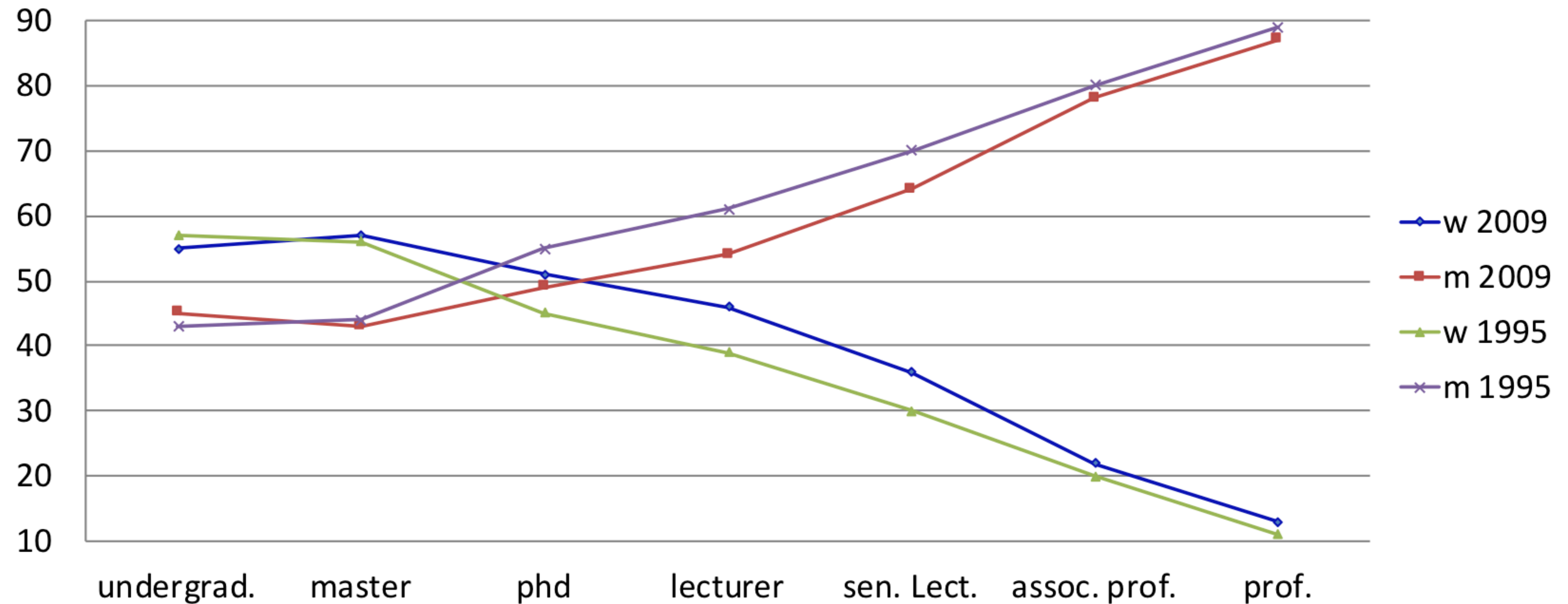
Source: European Commission (2007; Figure 3.1)

Proportions of men and women in a typical academic career, students and academic staff, EU-25, 1999-2003

Is it getting better? Should we sit and wait???

2

Actions
Gender



Data from The Hebrew University (Orna Kupferman, 2013)

Women in Logic

2

Actions
Gender



Conferences, Blog, Facebook, Twitter, Youtube, Mailing-list, Slack...

Webpage: <https://sites.google.com/view/womeninlogic>

Women in Logic

2

Actions
Gender



[Valeria de Paiva](#) (TOPOS Institute -- PUC-Rio)

2

Actions Gender

Concrete actions!!!

If you are "in charge", try to:

- find adequate gender balance (conferences, pcs)
- look for more than numbers
- bring young female researchers to the spot!

2

Actions Gender

Concrete actions!!!

If you are "in charge", try to:

- find adequate gender balance (conferences, pcs)
- look for more than numbers
- bring young female researchers to the spot!

If you are looking for opportunities, try to:

- speak up
- join communities
- go to conferences
- stay tuned!

Problem: overloading!

2

Actions
Gender



SANDRA ALVES

Assistant Professor DCC-FCUP
Researcher at CRACS, INESC-TEC
Portugal

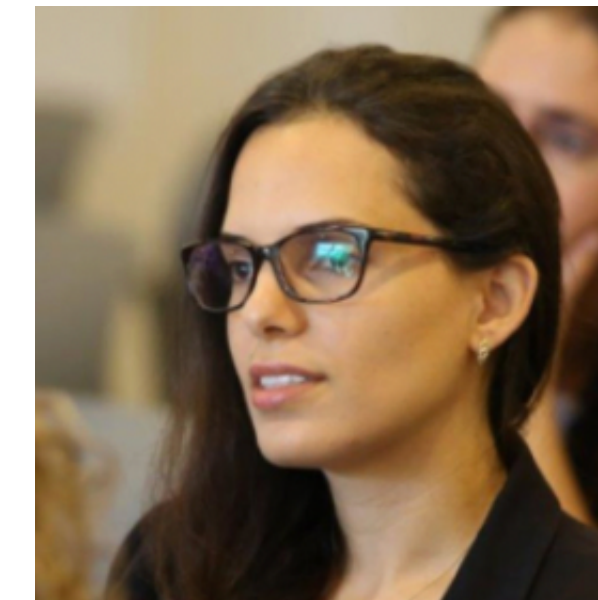
Co-chair: WiL2022, WiL2021, WiL2020
Organiser: CLAS 2022, Linearity-TLLA 2022
PC: TYPES 2022, TERMGRAPH 2022,
LSFA 2022, FoSSaCS2021, LSFA2021,
IWC2021, CSL2020, FSCD2020, LSFA2020...



ALEXANDRA SILVA

Professor
Computer Science Department
Cornell University, USA

Co-chair: CAV 2021, CALCO 2021,
WoLLIC 2020
Organiser: CLAS 2022, Linearity-TLLA 2022
PC-Member: FSCD 2021, CONCUR 2020,
MFPSXXXVI, CAV 2020, ESOP 2020,
POPL 2020
SC: LICS, PLMW, CMCS, ICE...



LIRON COHEN

Assistant Professor
Department of Computer Science
Ben-Gurion University, Israel

Co-chair: ITP2022, ITP2021
PC: LICS2022, CSL2022,
TABLEAUX2021, HOPE2021
Invited talk: LMW2022, CADE2021,
CiE2021, HoTT2021..

Problem: overloading!

2

Actions Gender

Elaine
Pimentel

^ Elaine Pimentel

Publications

Tools

Detailed info

v World Logic Day

Women in Mathematics

v Teaching

Academic background

Students

Personal

Associate Professor

[Programming Principles, Logic, and Verification](#)
[Department of Computer Science](#)
[University College London](#)

Full Professor (licensed) at [DMAT/UFRN](#)

Research Interests

- Proof theory, concurrency theory, ecumenical systems, game semantics, logical frameworks, linear logic, modal logics, intersection types, lambda-calculus.
- Ongoing research projects: [MOSAIC](#), PROSA and PROGEO.

[Past research projects.](#)



President of the [Brazilian Logic Society](#)

Member of the [LA committee](#) of the [Association for Symbolic Logic](#)

Other interests

- I am also very much interested in all aspects of Diversity and Inclusiveness. Check it out the message from [ASL!](#)
- Project [POTIMÁTICAS: Meninas Potiguares na Matemática](#): motivating girls to do Mathematics and Computer Science.
- [Matemática: s.f.](#) platform for women in Math.
- [Lógicas Brasileiras](#): Brazilian women in logic.
- World Logic Day: [check it out our initiatives!!](#)

Conferences

- Invited speaker at: [XIX SLALM](#), [Logic Mentoring Workshop @ CSL](#), [FSCD2021](#), [Logic Colloquium 2021](#), [LFMTP 2020](#), [IJCAR 2020](#), [II WMM](#), [XVIII SLALM](#), [LSFA2019](#), [EBL2019](#), [WoLLIC 2018](#), [SYSMICS 2018](#), [Filomena 2017](#), [LL 2016](#), [WoF 2015](#), [Linearity 2014](#)
- Co-chair of [CSL 2023](#), [WoLLIC 2022](#), [TLLA 2021](#), [LFMTP 2021](#) ...
- PC member of: [IJCAR 2022](#), [FoSSaCS 2022](#), [LICS2022](#), [LSFA 2022](#), [WiL 2022](#), ...

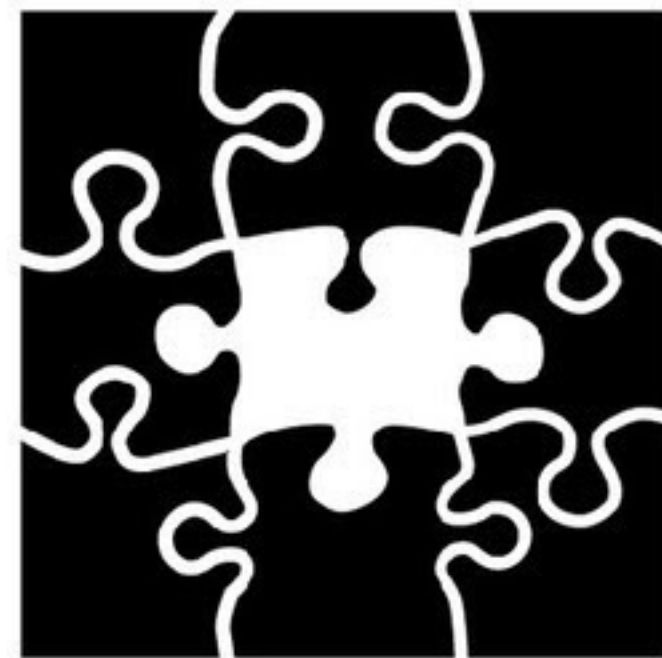
[Past conferences & more info.](#)

Concrete actions!!!



[Vienna Center for Logic and Algorithms](#)

Helmut Veith Stipend: exceptionally talented and motivated female students (Ms CS)



[Institute of Logic, Language and Computation of the University of Amsterdam](#)

ILLC Diversity Talks, today with Isabelle Collet

Digital Technology and Gender Equality: A Challenge for Higher Education

2

Actions
Gender

Eradicate racism



3

Actions
Race

3

Actions Race

#ShutDownLogic

Logic Supergroup in support of Black Lives Matter:

- met online for 24 consecutive hours of Inclusive Logic
- build concrete actions against racism in logic!



3

Actions Race

#ShutDownLogic

- doing our small part to increase the diversity in logic;

3

Actions Race

#ShutDownLogic

- doing our small part to increase the diversity in logic;
- commit to seeking funding from a broad range of sources in order to overcome barriers to participation in the supergroup;

3

Actions Race

#ShutDownLogic

- doing our small part to increase the diversity in logic;
- commit to seeking funding from a broad range of sources in order to overcome barriers to participation in the supergroup;
- hosting periodic events to discuss, evaluate, and develop resources for logic education that are inclusive and that encourage participation in logic from a diverse audience;

3

Actions Race

#ShutDownLogic

- doing our small part to increase the diversity in logic;
- commit to seeking funding from a broad range of sources in order to overcome barriers to participation in the supergroup;
- hosting periodic events to discuss, evaluate, and develop resources for logic education that are inclusive and that encourage participation in logic from a diverse audience;
- commit to developing, promoting, and enunciating guidelines and codes of conduct for our conferences, workshops and other events, as well as other events associated with our constituent organizations.

Take action!

3

Actions
Race



[#ShutDownSTEM](https://www.instagram.com/shutdownstem)

Take action!

If you are a student:

- Start a regular **equity-focused journal club** with peers.
- Start **conversations about racism** and anti-Blackness at department events.
- **Write to your faculty** and let them know that it's important that you see in their syllabus how they support the whole student, and specifically students who are marginalized.

[#ShutDownSTEM](#)

Take action!

If you are a researcher:

- **Look at the resources** out there and compile what is important for others to know in order to share more widely with your networks.
- Make this a **daily practice**, not just this one day.
- **Who publishes your research?** Find out how those periodicals are responding to the current times and write to them letting them know that as a contributor and author, you want to see them work towards more equitable structures that highlights and prioritizes marginalized voices in their publication.

[#ShutDownSTEM](#)

Take action!

3

Actions
Race

If you are part of the leadership of a department:

- Define **transparent hiring and admission processes** that dismantle systemic and structural racism in the academic hierarchy
- **Allocate funds** for an equity library in your department
- Listen to criticism and **implement change**

[#ShutDownSTEM](#)

Concrete actions!!!



- Home
- About
- Announcements
- Meetings
- Rules for Abstracts
- Student Travel Awards
- Sponsorship of Meetings
- Journals
- Books
- Inclusiveness
- ASL Committees
- ASL Membership
- Other Information
- Sitemap
- Contact

The following statement on diversity and inclusiveness was approved by the ASL Council on October 24, 2020.

Preamble

Distressing events in the USA and in other countries have increased our awareness of systemic racism and pervasive discrimination against disadvantaged or marginalized groups. Racism and discrimination are expressed in many different areas of social life, including education and employment. The ASL Council has adopted the following statement, which addresses the main areas in which the Association for Symbolic Logic plays a role.

Statement on Diversity and Inclusiveness

The Association for Symbolic Logic (ASL) recognizes that in societies around the world there are vulnerable groups of people that are marginalized and discriminated against because of race, color, caste, religion, national origin, ethnicity, migrant or indigenous status, socioeconomic status, political beliefs, gender, sexual orientation, gender identity or expression, and mental or physical disability. The ASL condemns, in the strongest possible terms, any form of marginalization and discrimination against individuals or groups of people based on such characteristics.

3

Actions Race

Concrete actions!!!

3

Actions
Race



Lógica e Representatividade

Bruno Lopes (UFF)

Celina Figueiredo (Computação - UFRJ)

Giselle Reis (Computação - CMU/Qatar)

Livy Real (Linguística/B2W Digital)

Marcos Silva (Filosofia UFPE)

Halina Macedo Leal (Filosofia - FURB)

Renata Wassermann (Matemática - USP)

Samuel Gomes da Silva (Matemática - UFBA)



Marcos Silva
UFPE

Concrete actions!!!

UCL Computer Science Race Equality Working Group Event: Action Not Just Words!

3

Actions
Race



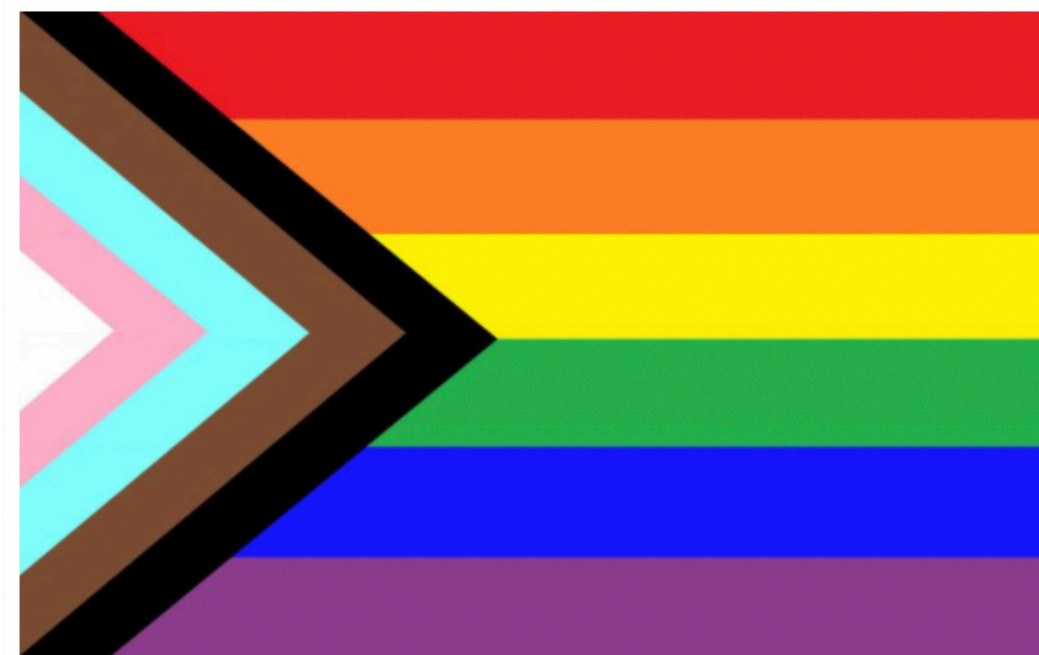
Gender Equality (Athena SWAN)



Neurodiversity



Disability Support



LGBTQ+



Race Equality



EDI Committee

Diversity also in research?

Looking for a job:

4

Actions
Research

Nature de l'emploi :	
<input checked="" type="checkbox"/> Maîtresse ou Maître de conférences /	<input type="checkbox"/> Professeure ou Professeur des universités
Article de recrutement : 26-I-1	
Etat du poste : <input checked="" type="checkbox"/> vacant / <input type="checkbox"/> susceptible d'être vacant	
Profil	
Réseaux et Systèmes Distribués et Complexes	
Titre et résumé du poste en anglais	
Computer networking, distributed and complex networks	
Future systems will be complex infrastructures with a high level of dynamicity. These systems will need to distribute the computation on a broad range of infrastructures going from IoT to cloud. This raises important questions related to analyzing, conceiving, deploying, and maintaining these infrastructures. The candidate will integrate one of the LIP6 research teams: Complex Networks, Delys, NPA.	
Euraxess Research Field	
Computer science	

Enseignement	
Filières de formation concernées	
Licence et Master d'informatique de Sorbonne Université et parcours informatique de Polytech Sorbonne	
Objectifs pédagogiques et besoin d'encadrement	
La personne recrutée partagera à parts égales son service d'enseignement entre : 1) la Licence et le Master d'informatique, et 2) les enseignements d'informatique de Polytech Sorbonne.	
Licence et master d'informatique :	
En Licence, il est attendu un investissement de la personne recrutée dans les UE générales de L1 et, en L2/L3, les UE de système et réseaux.	
En Master, selon son profil, la personne recrutée renforcera les enseignements des parcours « Réseaux » (RES) et « Systèmes et Application Réparties » (SAR).	
Parcours RES :	
Des besoins critiques sont identifiés dans les domaines suivants :	
<ul style="list-style-type: none">- Réseaux télécom 5G, 6G et au-delà- Virtualisation et Programmation des réseaux (SDN et NFV)- Cloud Networking et Cloud Native- Sécurité des réseaux- IoT (Internet des Objets)	
Parcours SAR :	
Les enseignements visés portent notamment sur la programmation répartie et autres domaines qui sont cruciaux pour la mise en œuvre de systèmes complexes massivement répartis, notamment les applications du Cloud.	

Profil	
Intelligence Artificielle : théorie et applications	
Titre et résumé du poste en anglais	
ARTIFICIAL INTELLIGENCE : theory and applications	
The position is open to all areas of AI and its applications. The recruited professor will develop his/her research in the heart of AI (e.g. formal methods of AI, algorithms, deep and statistical learning, interpretable / explainable AI, symbolic AI) as well as at the interfaces of AI with other disciplines (e.g. biomedical, medicine, robotics). He/she will be able to develop and deploy models and algorithms aimed to process heterogeneous, incomplete, sparse, noisy and often unstructured data. The candidate will integrate one of the laboratories: ISIR, LIB, LIMICS or LIP6 depending on his/her research themes, and/or projects involving several host laboratories within SCAI (Sorbonne Center of AI).	
Euraxess Research Field	
Computer science	

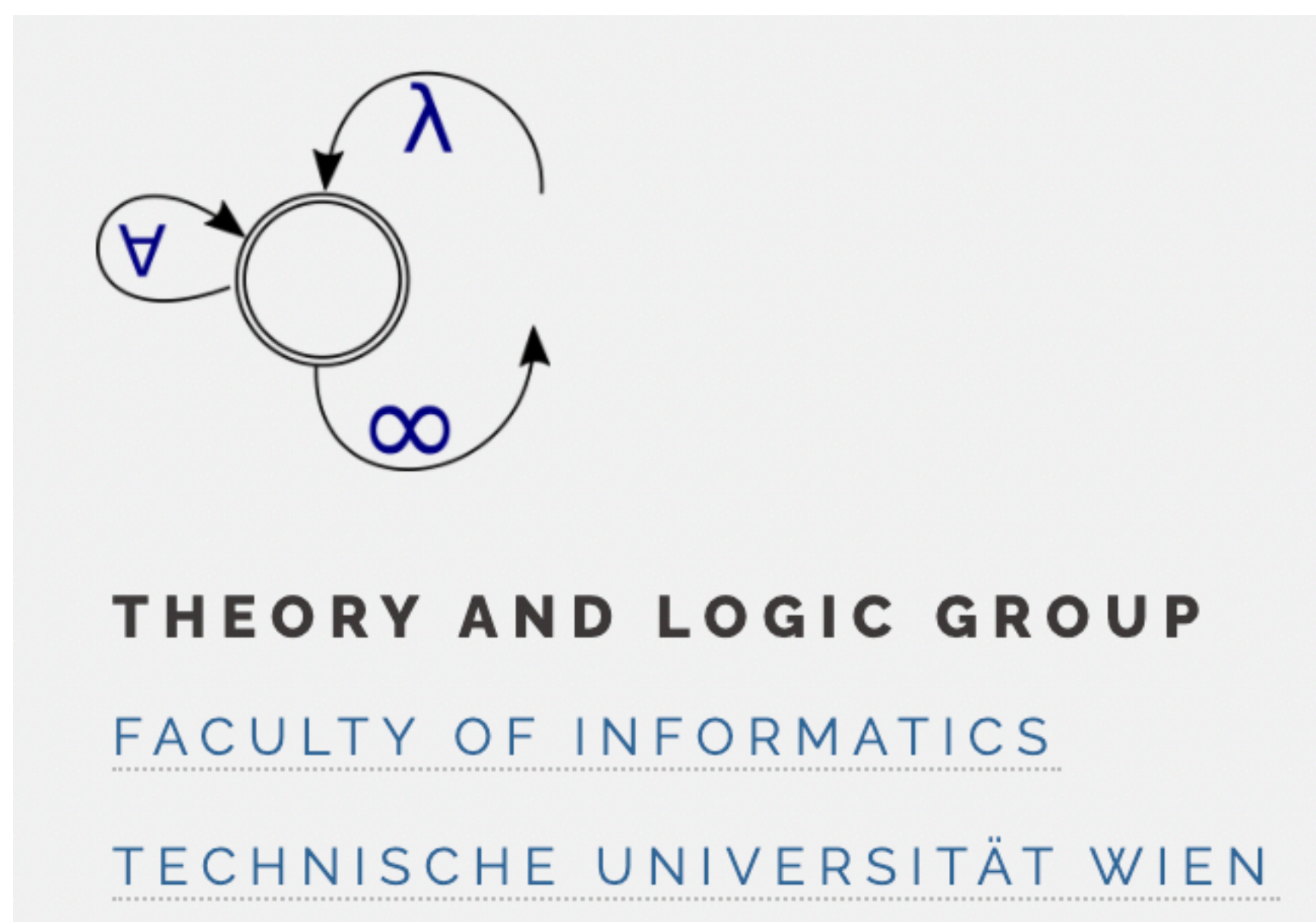
Enseignement	
Filières de formation concernées	
Licence - Master d'informatique	
Objectifs pédagogiques et besoin d'encadrement	
La personne recrutée interviendra de façon équilibrée sur les différents niveaux de formation, du L1 au M2.	
La personne recrutée contribuera significativement aux enseignements de Licence d'informatique dont les besoins couvrent l'ensemble de la discipline (algorithmique, programmation (notamment objet, concurrente, fonctionnelle, web), mathématiques discrètes, structures de données, système, architecture, réseaux, compilation, bases de données...)	
Pour ce qui concerne les enseignements en Master d'informatique, différents besoins seront à couvrir en fonction du profil de la personne recrutée. Plusieurs parcours sont concernés :	
Parcours ANDROIDE : Le candidat ou la candidate retenue interviendra sur les thématiques de modèles décisionnels interprétables, apprentissage et prise de décision en milieux incertains, modélisation et analyse de comportements collectifs.	
Parcours BIM : Le candidat ou la candidate retenue interviendra sur les thématiques de l'apprentissage automatique et profond, des sciences de données et de l'intégration des données biologiques et biomédicales dans le domaine de la bio-informatique.	
Parcours DAC : Le candidat ou la candidate retenue interviendra dans les domaines de la gestion des données massives et des modèles et algorithmes d'analyse et d'apprentissage avancés (machine learning, apprentissage distribué, intelligence computationnelle).	
La personne recrutée sera amenée à prendre des responsabilités, notamment dans les UE à fort effectif de L1, en particulier concernant les sciences des données.	

Where logic can apply?

Diversification of subjects, applications...

4

Actions
Research



Agata Ciabattoni



Chris Fermüller

Medicine, Indian Philosophy, AI...

Where logic can apply?

Diversification of subjects, applications...



4

Actions
Research



David Pym



Timo Lang



Alex Gheorghiu



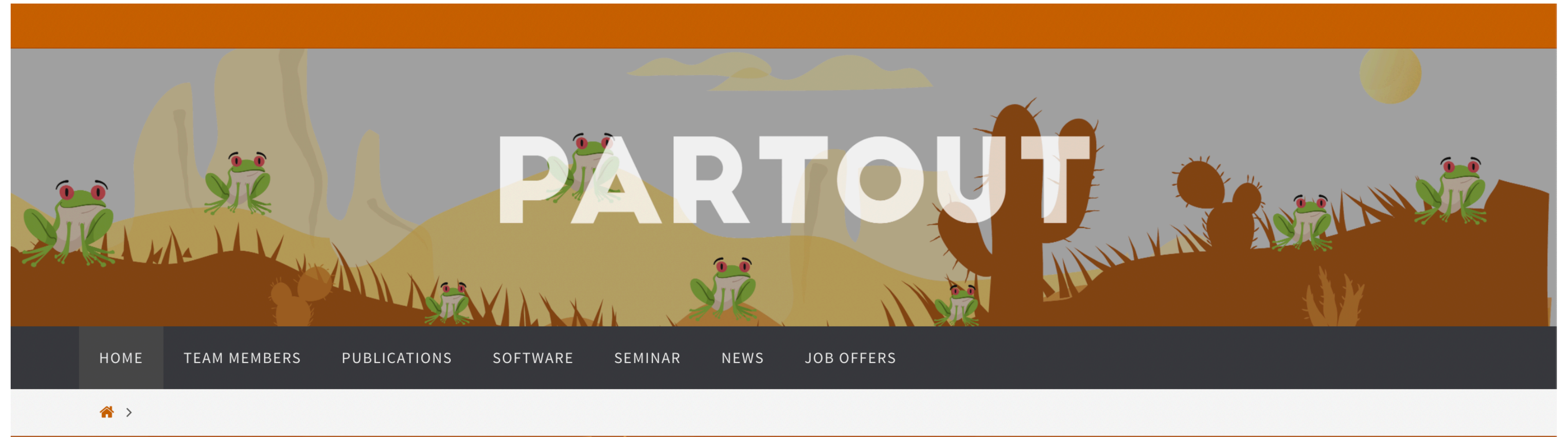
Merhnoosh Sadrzadeh

Security, Verification, Natural Language Processing...

Logic applied to logic

4

Actions
Research



“

*Proof Automation and RepresentAtion:
a fOundation of compUtation and deducTion*

Lutz Straßburger et al.
Inria, Research Center Saclay- Île-de-France and LIX, École Polytechnique

Proof Theory applied to Proof Theory :)

4

Actions
Research



Anupam Das
University of Birmingham



Sonia Marin
University of Birmingham



Revantha Ramanayake
University of Groningen

In any case, just be happy with your choices!

Leaving academia :(

4

Actions
Research



Björn Lellmann
SBA Research



Lara Spendier
OBB



Vivek Nigam
HUAWEI

But always carrying the logical background :)

When academia and industry meets to talk

Academic research applied to the industrial setting

4

Actions
Research



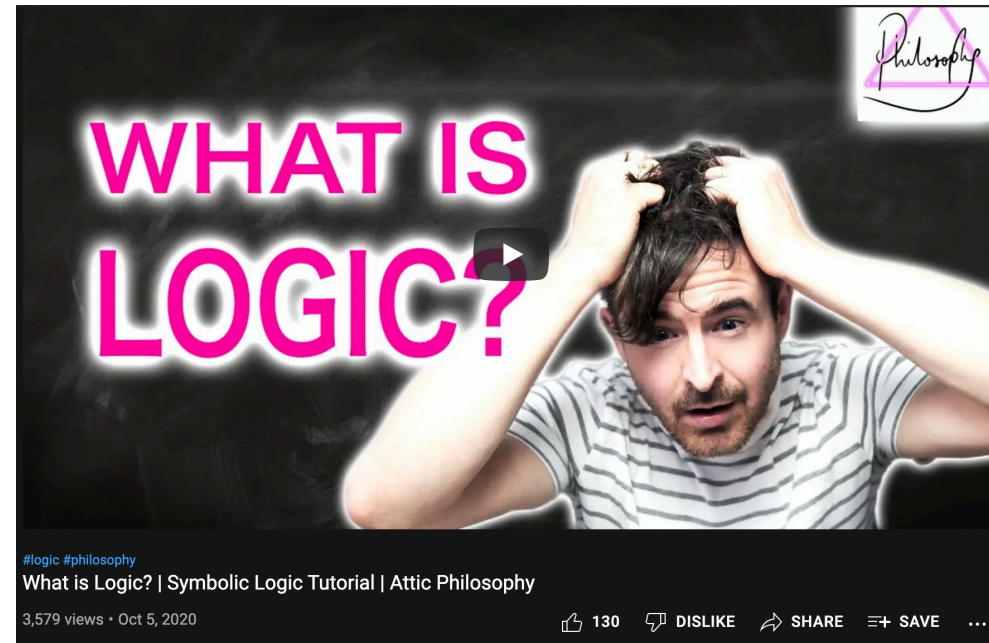
Peter O'Hearn

Static program analysis at UCL + FB/Lacework

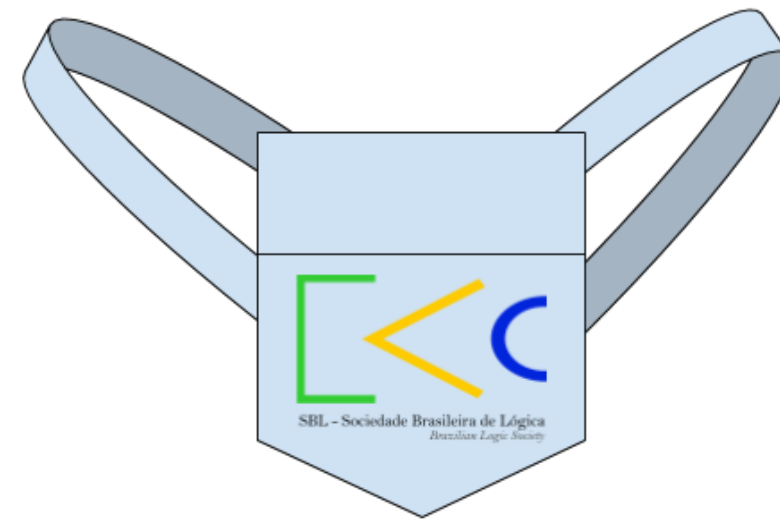
Concrete actions!!!

4

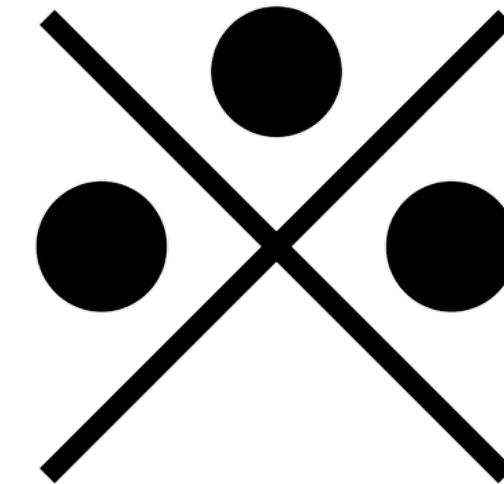
Actions
Research



Attic Philosophy
Mark Jago



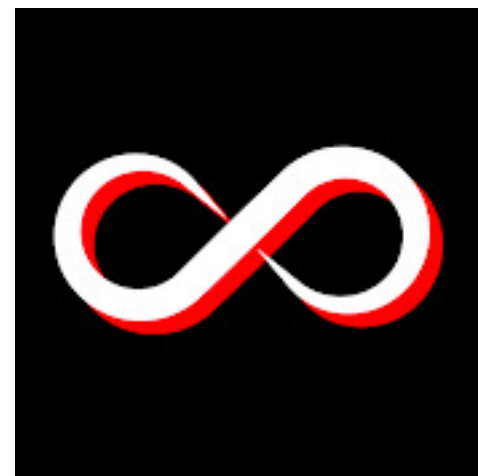
Lógicos em quarentena
Bruno Lopes



Lógica MX
María Martínez-Ordaz et al.



Coletivo Lógica Viva
Marcos Silva et al.



Canal Ad Infinitum
Rodrigo Freire & Edgar Almeida



The Nordic Online Logic Seminar



The Logic Supergroup

Australasian Association for Logic

The professional organisation for logicians in Australia and New Zealand, est. 1965



The difficult art of communicating logic!!

Concrete actions!!!

4

Actions
Research



Mauricio Ayala-Rincón
UnB



Daniele Nantes



Daniel Ventura



Delia Kesner
Université de Paris



Maribel Fernandez
King's College London

Internationalization/cooperation

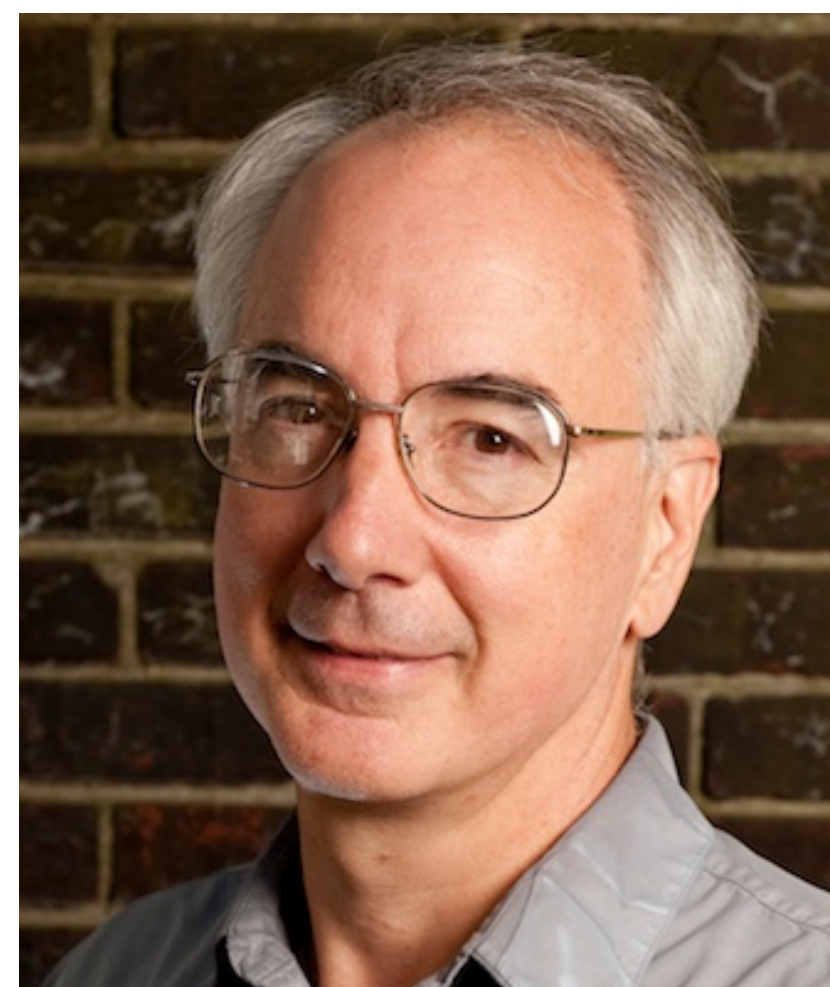
Concrete actions!!!

4

Actions
Research



Carlos Olarte
Université Sorbonne Paris Nord



Dale Miller
Inria Saclay - Île-de-France



Giselle Reis
CMU-Qatar



Luiz Carlos Pereira
PUC-Rio/UERJ

Build international cooperation with friends!

Concrete actions!!!

If you are in an underrepresented country/group:

- try to start international collaborations
- send your students abroad!
- start seminars, involve the community...

4

Actions
Research

4

Actions Research

Concrete actions!!!

If you are in an underrepresented country/group:

- try to start international collaborations
- send your students abroad!
- start seminars, involve the community...

If you are in a strong/established group:

- open space to underrepresented groups
- propose multi-regional projects
- open places for foreign students

Questions?



Credit: [www](#)